

# PSF Torches

## Water-cooled Industrial Series



PSF 520W

PSF 420W

The next generation of PSF has been completely redesigned with front-end wear parts that remain fully compatible with the time-proven heritage PSF wear parts. The modern look and feel, as well as improved performance, make this the right tool for even the most demanding industrial applications.

- 2 sizes of water-cooled models
- PSF 520W with dual-circuit cooling system for optimal performance
- Threaded gas nozzles secure a firm fit and better heat dispersion
- Very durable wear part system with robust tip adapter and long tips for the toughest applications
- CuCrZr contact tips for long life
- Optional remote control module

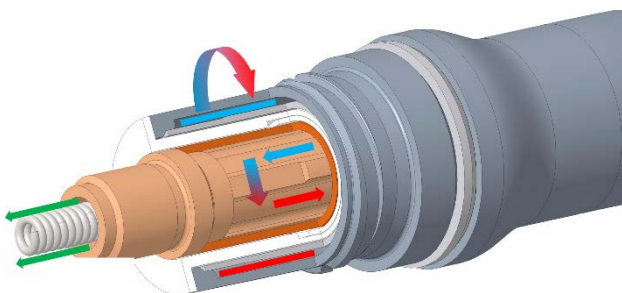
Visit [esab.com](http://esab.com) for more information.

### Industry

- Ship and Offshore Yards
- Repair and Maintenance
- Steel Industry
- Industrial and General Fabrication
- Automotive



*With an ergonomic and well-balanced handle with soft grip feature, the new PSF torch models ensure best comfort for the welder.*



*Dual-circuit cooling system (520W) ensure the critical front-end stays cool even under extreme conditions. Less heat means better wire feedability and fewer production stops to change wear parts.*



*The RS3 module provides the option to select between 3 programs. RS3 is compatible with any ESAB machines with MA23-, MA24-, MA25-, U6- or U8<sub>2</sub> control panels.*

# PSF Torches

| Specifications                 |                  |                     |
|--------------------------------|------------------|---------------------|
| Description                    | PSF 420W         | PSF 520W            |
| Cooling                        | Water            | Water, dual-circuit |
| Welding Output Mixed Gas       | 450 A at 100%    | 500 A at 100%       |
| Welding Output CO <sub>2</sub> | 450 A at 100%    | 500 A at 100%       |
| Wire Diameter                  | 0.8 – 1.6 mm     | 1.0 – 1.6 mm        |
| Certification Mark (Standards) | CE (IEC 60974-7) |                     |
| Operating Temperature          | -10 to +40 °C    |                     |
| Cable Length                   | 3 m, 4 m, 5m     |                     |

| Ordering Information               |            |            |            |
|------------------------------------|------------|------------|------------|
| Description                        | 3 m        | 4 m        | 5 m        |
| PSF 420W, with Euro Connection     | 0700025060 | 0700025061 | 0700025062 |
| PSF 420W RS3, with Euro Connection | 0700025063 | 0700025064 | -          |
| PSF 520W, with Euro Connection     | 0700025070 | 0700025071 | 0700025072 |
| PSF 520W RS3, with Euro Connection | 0700025073 | 0700025074 | -          |

| Wear Parts – Liners  |             |          |          |
|--|-------------|----------|----------|
| Description  | Part Number | PSF 420W | PSF 520W |
| <b>Steel liner</b>   |             |          |          |
| 0.8 – 1.0, Blue, 3 m                                       | 0700200085  | x        | x        |
| 0.8 – 1.0, Blue, 4 m                                       | 0700200086  | x        | x        |
| 0.8 – 1.0, Blue, 5 m                                       | 0700025800  | x        | x        |
| 1.0 – 1.2, Red, 3 m  | 0700200087  | x        | x        |
| 1.0 – 1.2, Red, 4 m  | 0700200088  | x        | x        |
| 1.0 – 1.2, Red, 5 m  | 0700025801  | x        | x        |
| 1.2 – 1.6, Yellow, 3 m                                     | 0700025802  | x        | x        |
| 1.2 – 1.6, Yellow, 4 m                                     | 0700025803  | x        | x        |
| 1.2 – 1.6, Yellow, 5 m                                     | 0700025804  | x        | x        |
| <b>PTFE liner (for Aluminium)</b>                          |             |          |          |
| 1.0 – 1.2, Red, 3 m  | 0700200091  | x        | x        |
| 1.0 – 1.2, Red, 4 m  | 0700200092  | x        | x        |
| 1.0 – 1.2, Red, 5 m  | 0700025812  | x        | x        |
| 1.2 – 1.6, Yellow, 3 m                                     | 0700025813  | x        | x        |
| 1.2 – 1.6, Yellow, 4 m                                     | 0700025814  | x        | x        |
| 1.2 – 1.6, Yellow, 5 m                                     | 0700025815  | x        | x        |
| <b>PA/Bronze-Liner (for aluminium and stainless steel)</b> |             |          |          |
| 0.8 – 1.0, Anthracite 3 m                                  | 0700025816  | x        | x        |
| 0.8 – 1.0, Anthracite 4 m                                  | 0700025817  | x        | x        |
| 0.8 – 1.0, Anthracite 5 m                                  | 0700025818  | x        | x        |
| 1.2 – 1.6, Anthracite 3 m                                  | 0700025819  | x        | x        |
| 1.2 – 1.6, Anthracite 4 m                                  | 0700025820  | x        | x        |
| 1.2 – 1.6, Anthracite 5 m                                  | 0700025821  | x        | x        |

For complete list of wear and spare parts please see separate manual or spare parts list.

# PSF Torches

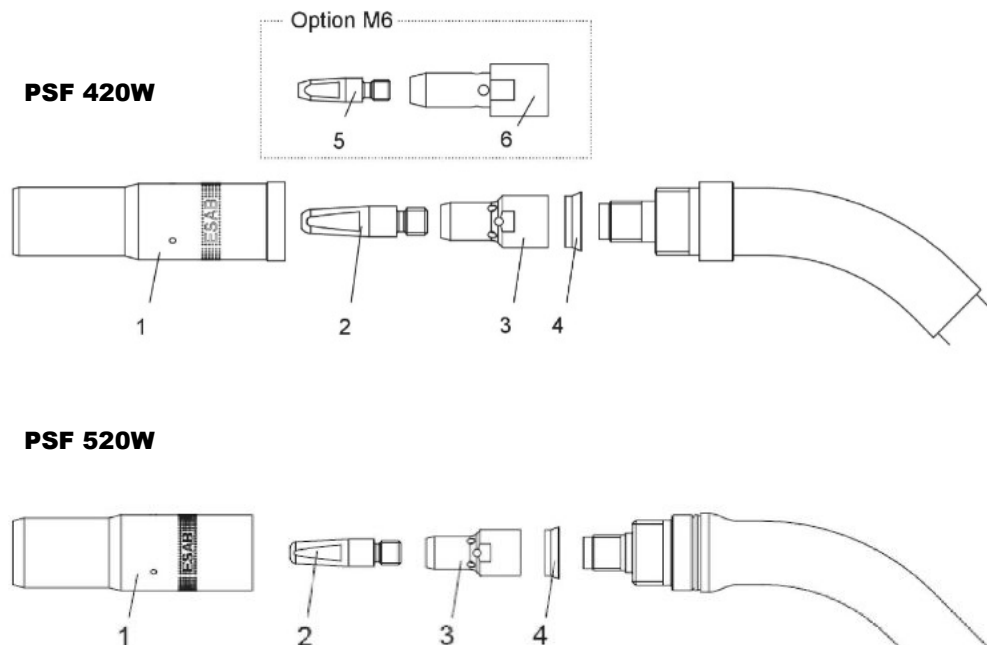
## Wear Parts

| No. | Description                    | PSF 420W             | PSF 520W              |
|-----|--------------------------------|----------------------|-----------------------|
| 1   | Gas Nozzle Conical             | 0458464882 (Ø 16 mm) | 0458 464883 (Ø 17 mm) |
| 1   | Gas Nozzle Conical only for M6 | 0458465882 (Ø 14 mm) | 0458465883 (Ø 15 mm)  |
| 1   | Gas Nozzle Cylindrical         | 0458470882 (Ø 19 mm) | 0458470883 (Ø 21 mm)  |
| 3   | Tip Adapter M6                 | 0366394001           | -                     |
| 3   | Tip Adapter M8                 | 0460819001           | 0460819001            |
| 4   | Insulation Washer              | 0458874001           | 0458874001            |

## Wear Parts – Contact Tips

| No. | Gas / Wire Ø    |        | PSF 420W   |            | PSF 520W   |
|-----|-----------------|--------|------------|------------|------------|
|     | CO <sub>2</sub> | Mix/Ar | M6         | M8         | M8         |
| 2   | 0.6             |        | 0468500001 |            |            |
| 2   |                 | 0.6    | 0468500002 |            |            |
| 2   | 0.8             |        | 0468500003 | 0468502003 | 0468502003 |
| 2   | 0.9             | 0.8    | 0468500004 | 0468502004 | 0468502004 |
| 2   | 1.0             | 0.9    | 0468500005 | 0468502005 | 0468502005 |
| 2   | 1.2             |        | 0468500006 | 0468502006 | 0468502006 |
| 2   | 1.2             | 1.0    | 0468500007 | 0468502007 | 0468502007 |
| 2   | 1.4             | 1.2    | 0468500008 | 0468502008 | 0468502008 |
| 2   | 1.6             |        | 0468500009 | 0468502009 | 0468502009 |
| 2   |                 | 1.6    | 0468500010 | 0468502010 | 0468502010 |

For complete list of wear and spare parts please see separate manual or spare parts list.



# PSF Torches

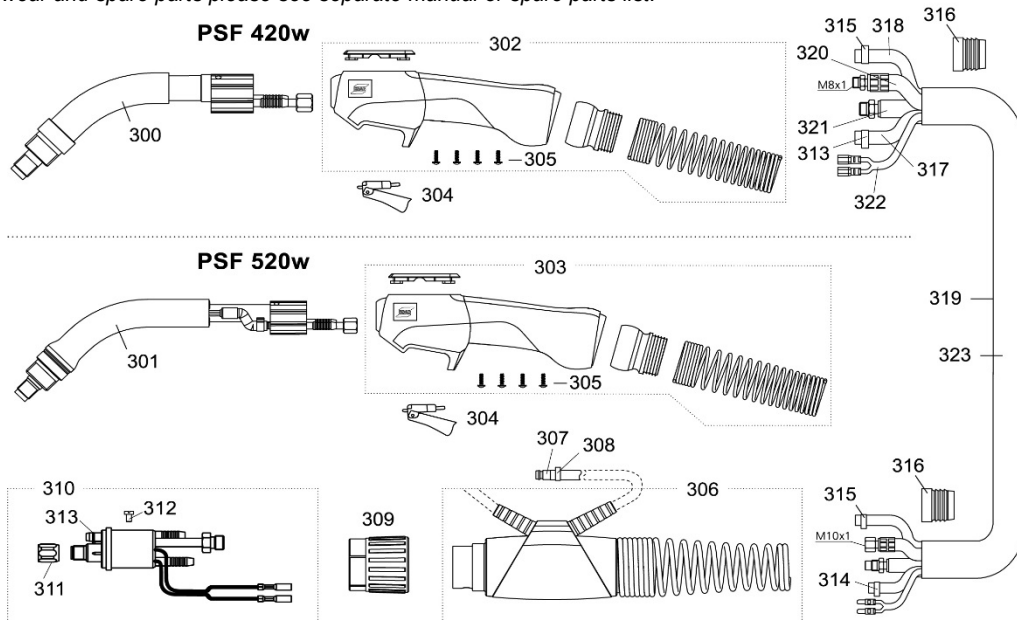
## Spare Parts

| No. | Description                          | Part Number | PSF 420W | PSF 520W |
|-----|--------------------------------------|-------------|----------|----------|
| 300 | Torch neck PSF 420W                  | 0700025004  | x        |          |
| 201 | Torch neck PSF 520W                  | 0700025005  |          | x        |
| 302 | Handle Complete PSF 420w             | 0700025905  | x        |          |
| 303 | Handle Complete PSF 520w             | 0700025906  |          | x        |
| 304 | Trigger, yellow, 2-poles             | 0700025903  | x        | x        |
| 306 | Cable support cpl.                   | 0700025971  | x        | x        |
| 307 | Quick Connector                      | 0700025973  | x        | x        |
| 310 | Central Connector W                  | 0700025970  | x        | x        |
| 314 | Hose Clamp w/ Ring Ø 8.7             | 0700025974  | x        | x        |
| 308 | Hose Clamp w/ Ring Ø 9.0             | 0700025975  | x        | x        |
| 315 | Hose Clamp w/ Ring Ø 9.5             | 0700025976  | x        | x        |
| 316 | Clamping Ring Outer Cover            | 0700025972  | x        | x        |
| 317 | PVC-Gas Hose, Black, 4.5 x 1.5 mm    | 0700025993  | x        | x        |
| 318 | PVC hose, Braided, Black, 5 x 1.5 mm | 0700025994  | x        | x        |
| 319 | Fabric Outer Cover                   | 0700025992  | x        | x        |
| -   | RS3 Module Complete                  | 0700025850  | (x)      | (x)      |

## Spare Parts - Cables

| No. | Description        | 3 m        | 4 m        | 5 m        |
|-----|--------------------|------------|------------|------------|
| 320 | Water-power Cable  | 0700025983 | 0700025984 | 0700025985 |
| 321 | Wire Conduit       | 0700025986 | 0700025987 | 0700025988 |
| 322 | Control Cable cpl. | 0700025989 | 0700025990 | 0700025991 |
| 323 | Cable Assembly     | 0700025980 | 0700025981 | 0700025982 |

For complete list of wear and spare parts please see separate manual or spare parts list.



ESAB / esab.com

